

Model 4526

Auto-Stepback Wedge Bonder

The Model 4526 Auto-Stepback Wedge Bonder is designed for Aluminum wire, Gold wire and Ribbon.

It is especially appropriate for your high quality applications requiring tight control of wire length and loop formation.

The 4526 offers control of individual bond parameters and programmable loop formation along with the capability of using a wide variety of wires.

The new bonding head with the deep access option and tail adjust system, makes it ideal for deep cavity microwave applications where tight control over the tail length is required.

Here's Why

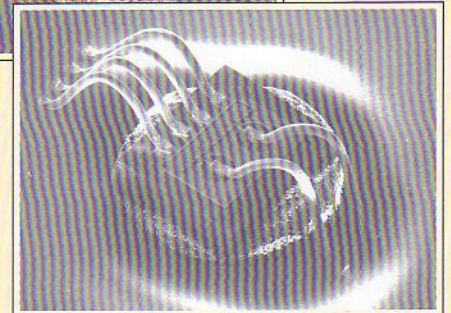
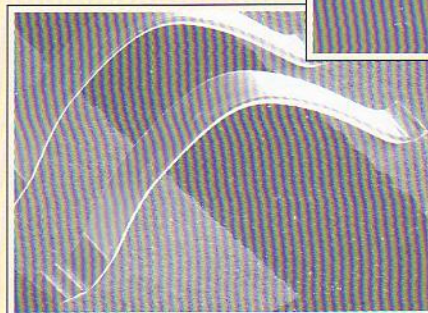
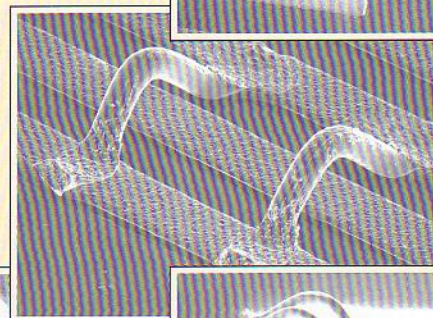
- One bonding head for deep access & standard bonding
- Programmable loop formation
- Consistent tail length with real-time fine adjust
- Large bonding area
- Easy operation (semi-auto, manual)

Microwave

Hybrid/MCM

Chip On Board

Discrete devices



CORPORATE HEADQUARTERS

2101 Blair Mill Road
Willow Grove, PA 19090
(215) 784-6000 phone
(215) 659-7588 fax

USA/AMERICAS

US Eastern Regional Office

2101 Blair Mill Road
Willow Grove, PA 19090
(215) 784-6788 phone
(215) 784-6181 fax

US Western Regional Office

2210 Martin Avenue
Santa Clara, CA 95050
(408) 727-5040 phone
(408) 727-4929 fax

EUROPE

Kulicke & Soffa (AG)
Zeughausgasse 9a
CH-6301 Zug, Switzerland
(41) 41-710-04-77 phone
(41) 41-710-07-04 fax

ASIA

Hong Kong Regional Office

Kulicke & Soffa (Asia) Ltd.
21/F Yen Sheng Centre
64 Hoi Yuen Road, Kwun Tong
Kowloon, Hong Kong
(852) 2955-3668 phone
(852) 2955-3666 fax

Singapore Regional Office

Kulicke & Soffa Singapore, Inc.
Block 5012 Ang Mo Kio Avenue 5
#04-06 Techplace II, Singapore 569876
(65) 481-2166 phone
(65) 481-6225 fax

JAPAN

Kulicke & Soffa (Japan) Ltd.
Sales Office and Technology Center
No. 5 Koike Bldg. 3F
1-3-12 Kita-Shinagawa
Shinagawa-ku, Tokyo 140, Japan

Sales Office
(81)3-5461-1520 phone
(81)3-5461-1597 fax
Technology Center
(81) 3-3450-7601 phone
(81) 3-3450-7607 fax

Model 4526

Auto-Stepback Wedge Bonder

Technical specifications

Wire

Diameter range

Gold	12.7 to 76 μ m (0.5 to 3 mil)
Aluminum	20 to 76 μ m (0.8 to 3 mil)
Gold ribbon	option up to 25 x 250 μ m (1 x 10 mil)
Spool	12.7mm (0.5 inch) option 50.8 mm (2 inch)

Machine Specifications

Bonding area .. 134x134 mm (5.3x5.3 inch)
Throat depth 143 mm (5.6 inch)
Gross table motion 140 mm (5.5 inch)
Fine table motion 14 mm (0.55 inch)
Mouse ratio 6:1
Motorized Y: stepback up to 4 mm (160 mil)
reverse up to 0.25 mm (10 mil)
kink height up to 0.5 mm (20 mil)
"Z" motion system DC servo/LVDT control
"Z" travel: Low reset 6.6 mm (260 mil)
High reset ... 12.7 mm (500 mil)

Ultrasonic sys. .. high Q 60 kHz transducer
.... PLL ultrasonic generator
Low ultrasonic power 1.3 W
High ultrasonic power 2.5 W
Bond time ... 10-100 mSec/10-1000 mSec
Bond force force coil 10-160 gr.
Wire termination clamp tear
Wire feed angle 30/45° option 90°
Modes of operation Semi-Auto,
Manual "Z", Stitch, Lange coupler
Temperature controller .. up to 250°±0.5°C

Options

- Microscopes and eyepieces
- Fiber optic illumination and spot light
- Ribbon clamp
- 90° wire feed angle kit for deep access
- Manual adjustable height, heated workholders
- Spot light target
- Motorized index workholders
- 3rd channel kit
- Mini-Heater kit
- Height-adjustable rotary table

Electrical Requirements

100-120/220-240 V ±10% 50/60 Hz 250 VA max.

Physical Dimensions

680 mm (27") W x 700 mm (27.5") D x 530 mm (21") H

Weight (basic machine)

Shipping 55 kg (122 lb)

Industry Standards

Complies with UL and CE standards

Other specifications required by customer are possible.
Specifications are subject to change without prior notice.

A focus on customer support

K&S equipment is backed by a worldwide Customer Support organization whose responsibility to customers continues after delivery and installation.

Services Offered

- Spare Parts
- Technical Training
- User Documentation
- Equipment Repairs/Installation
- Preventive Maintenance
- Customized Contracts

To Order or Schedule Services

North America - (800)422-5542
Asia - (852)23-896323
Europe - Contact your local sales representative